

SOUTH OF MARKET PROJECT AREA COMMITTEE

SOMPAC

Advisory body to the San Francisco Redevelopment Agency

SOMA ALLEYWAYS IMPROVEMENT PROJECT

On September 29, 2007, a design charrette sponsored by the American Institute of Architects (“AIA”) was held for the SOMA Alleyways Improvement Project. Community residents, business owners and design professionals gathered and brainstormed ideas to improve the condition of alleys in the South of Market Redevelopment Project Area (the “Project Area”). The ideas discussed included raised crosswalks, textured asphalt, sidewalk plaques, new pedestrian-friendly lighting, landscaping, sidewalk widening/bulb-outs, new street trees, and “chicanes” (alternate side of the street parking) in order to slow down cars on the alleys. The results of the charrette are currently being used by staff from the San Francisco Redevelopment Agency (the “Agency”) and the San Francisco Department of Public Works (“DPW”) to develop a concept plan for presentation to the community at the next public meeting, which will take place in late January (precise time and place to be determined).

The SOMA Alleyways Improvement Project is being funded by the Agency as part of its overall revitalization program for the Project Area, which includes construction of new affordable housing and forgivable loans to business and property owners. In 2006, the Agency and DPW completed streetscape improvements on Sixth Street between Market and Harrison Streets, which have improved the quality of life in the Project Area by adding widened sidewalks, new street trees, and ornamental street lights. The Agency and DPW worked closely together on the project, with DPW providing full planning, design and construction management services. On Sixth Street, the Agency funded the sidewalk improvements and DPW funded street repaving. The improvements have noticeably improved the appearance of Sixth Street and have aided the Agency’s efforts to attract businesses to Sixth Street and improve the quality of life for area residents.

Based on the success of the Sixth Street improvements, Agency staff and the South of Market Project Area Committee (“SOMPAC”) had discussions in early 2007 with DPW about improving the mixed-use alleyways in the Project Area. These alleyways serve as both residential and commercial streets, and have a wide range of low- to mid-rise buildings. However, most of the alleyways in the Project Area are characterized by broken pavement and a lack of street trees and lighting. In addition, the layout of the alleyways encourages automobile traffic to travel at high speeds. Together these conditions make the alleyways unfriendly and even dangerous for pedestrians and bicyclists.

Through discussions with SOMPAC, Agency staff and DPW have identified an initial set of alleyways for improvements. In May 2007, the Agency approved a letter agreement with DPW with an initial funding amount of \$120,000 for the planning phase for the initial set of alleys and budgeted \$15,000 for the design charrette sponsored by AIA. The primary goals of the alleyway improvements are to slow automobile traffic and enhance the sidewalks in order to make the alleyways more pedestrian-friendly and bicycle-friendly. A wide range of improvements is possible, including raised crosswalks, chicanes (alternating parking on either side of the street), widened sidewalks, street trees and street lights. Construction of the first phase of the alleyway improvements (Minna, Natoma, and Russ Streets between Howard/Mission/6th/7th Streets) will be paid for by the Agency with \$1,000,000 in tax increment funding available in the current fiscal year budget. Funding for the second phase (Harriet, Russ, and Moss Streets between Howard/Folsom/6th/7th Streets) and future phases of the improvements will be requested in future years.

At the design charrette on September 29, 2007, community members and design professionals worked in teams to address specific alleyways as well as broader concepts for the improvements. AIA staff took the sketches created during the workshops and developed renderings showing the potential improvements that could happen in the first two phases of the project.

The charrette participants recommended raised crosswalks (see rendering #1) on the alleys where they intersect with major streets, chicanes (see rendering #2) on the alleys that currently have single-side of the street parking in order to slow down traffic, and an extension of the children’s park on Minna & Russ into the public right-of-way (see renderings #3 and #4). The charrette participants also recommended new street trees and street lights along all of the alleys. On Russ Street, the charrette participants looked at different parking arrangements in order to slow down traffic while at the same time preserving the number of parking spaces on the street.

Another idea that was discussed during the charrette was adding a traffic signal at the intersections of Russ and Howard/Folsom Streets.

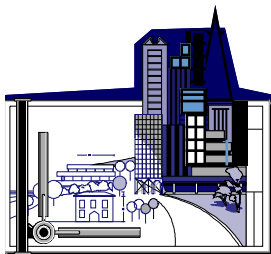
continued on page 3

SOUTH OF MARKET COMMUNITY RESOURCE GUIDE

SOUTHERN POLICE STATION

850 Bryant Street at 7th San Francisco, CA 94103
 553-1373 Fax 553-1073 Anonymous tip line: 552-4901
 Station Captain: McDonagh

911 Emergency Dispatch	911	Call for immediate threat to life or property, violence, murder, robbery in progress, use of weapons, fire or medical emergency in progress.
SFPD Non-Emergency number	553-0123	Quality of life calls-no immediate threat to life or property. Non-violent crimes, crack smoking, drug dealing on street, drinking alcohol on street, etc...
Mobile Assistance Program MAP Homeless Outreach Van	431-7400 (any day 24 hours)	Drunks on the street who are non-violent or passed out or seem to need help, but who don't seem to need medical attention. Homeless sleeping on sidewalk, driveways or porches.
The San Francisco Tool Lending Center	1:00-6:00 pm Wed-Fri Sat 9:00-5:00 701-8665 (Tool)	Lends hand tools and offers educational workshops. Provides residents and property owners access to tools free of charge, to promote neighborhood beautification.
DPW MJM Management DPT	311 820-3550 553-9817 553-1200	Graffiti removal, excessive litter or illegal dumping. Street Cleaning Abandoned Cars Cars parked on sidewalk, blocking driveway.



For the month ending October 2007, burglaries decreased by 33% over the same time last year. Auto burglaries decreased by 58%, other thefts decreased by 33% and auto theft decreased by 45% from last year. Robberies decreased by 150%, aggravated assault increased by 3%, drugs/narcotics increased by 23% and vandalism decreased by 54%.

**Southern District Preliminary Crime Report for South of Market
Project Area Month Ending: October 2007**

Part I Crimes for SOM Project Area	OCTOBER 2006	OCTOBER 2007
Homicide	0	0
Rape	1	1
Robbery	15	6
Aggravated Assault	35	36
Burglary	15	10
Auto Burglary	78	33
Other Thefts	33	22
Auto Theft	16	11
Drug/Narcotics	43	53
Vandalism	13	6

SOMPAC NEWSLETTER
 1035 Folsom Street
 San Francisco, CA 94103

Newsletter Advisory Board
 PAC Executive Committee
 PAC Members
 SFRA Staff

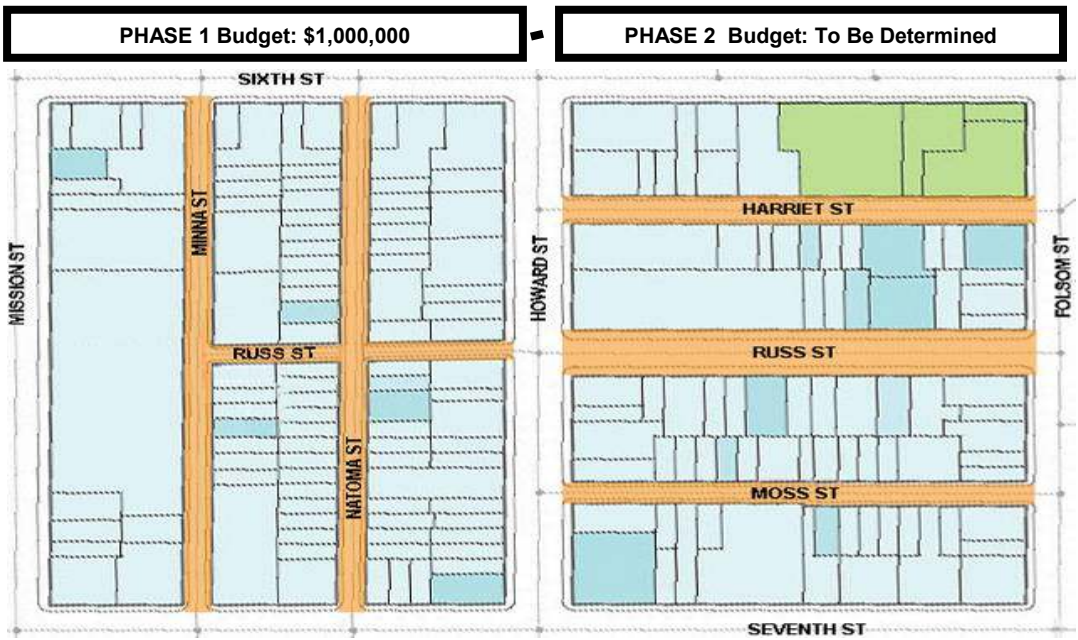
SOMPAC Newsletter is published quarterly. Send inquires, address changes, and all other correspondence to Marcia Ban
 1035 Folsom Street
 San Francisco, CA 94103

Telephone (415) 487-2166
 Fax (415) 487-2169
 e-mail: community@sompac.com
www.sompac.com
 Copyright © 2007 SOMPAC

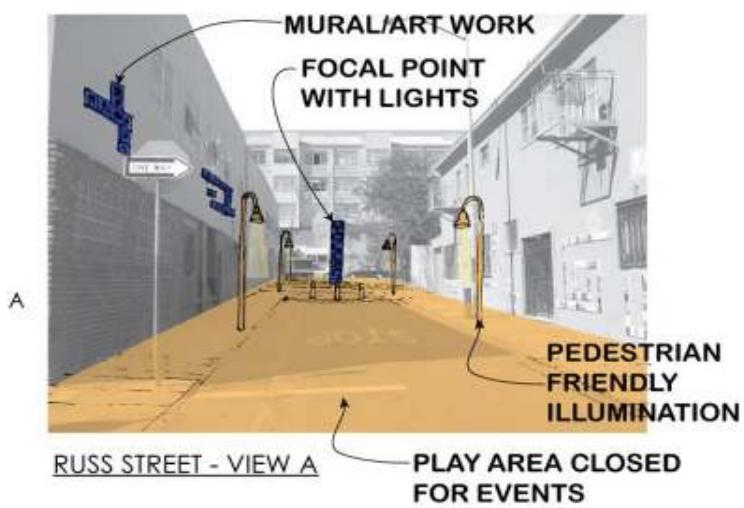
SOMA ALLEYWAYS IMPROVEMENT PROJECT

Community members emphasized that, although there is no existing crosswalk at these mid-block areas of Howard and Folsom Streets, pedestrians frequently cross, primarily to get to the park on the south side of Folsom Street directly across from Russ Street. Because of the high cost of adding traffic signals, and because they are not typically considered to be a tool for alleviating blighting conditions as defined by the California Community Redevelopment Law, another source of funding will need to be identified in order to pay for the traffic signals. Agency staff and DPW staff are currently working with staff from the San Francisco Municipal Transportation Agency to understand how the need for traffic signals can be addressed.

The concepts developed during the charrette will be combined into a draft concept plan for public review that will be presented to SOMPAC and the community at the next public meeting in late January. Notices of the time and place of the meeting will be mailed to all residents and business owners on the affected alleys, as well as anyone else who is interested. If you would like to be put on the mailing list, please contact Navelle Rufus at the San Francisco Redevelopment Agency at (415) 749-2551 or navelle.rufus@sfgov.org. If you have general questions about the alleyways improvements project, please contact Mike Grisso at the San Francisco Redevelopment Agency at (415) 749-2510 or mike.grisso@sfgov.org or John Thomas at the San Francisco Department of Public Works at (415) 558-4498 or john.f.thomas@sfdpw.org.



- Planning Phase August-December 2007
- Design Phase January-April 2008
- Bidding Award Phase May-October 2008
- Construction November 2008- November 2009



SOMA ALLEYWAYS IMPROVEMENT PROJECT



Chicanes shift traffic lane alignment by:

- Slowing traffic by creating a jog in the roadway
- On one-way street, shifts on-street parking to create effect
- Breaks slight line of vehicle lane
- Provides landscaping opportunity

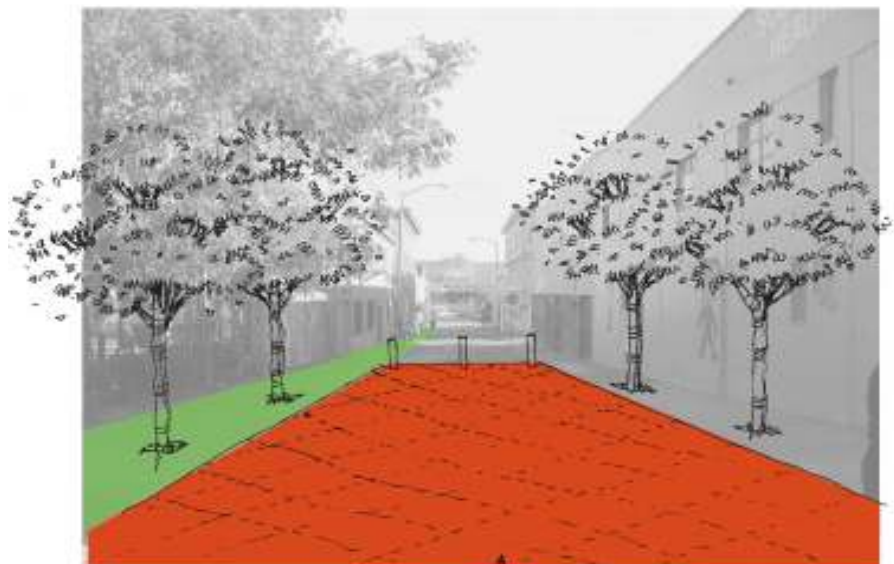
MOSS STREET - VIEW B

Paving texture and color:

- Enhances aesthetic quality of roadway
- Promotes roadway as a pedestrian-friendly plaza space
- Slows vehicular traffic

Bollards:

- Defines vehicular and pedestrian realms
- Improves aesthetics and pedestrian experience
- Controls illegal parking and improves safety



EXTENSION OF CHILDREN'S PARK INTO THE PUBLIC WAY

STREET VIEW A

NEW BUSINESS SPOTLIGHT

Business Name: Muse Studios and Dekker Photography

Owners: Laura Kudritzki and Beth Berman

Products and Services: Commercial photography including weddings, portraiture, fashion, product, editorial, and music.

Address: 224 Sixth Street (between Howard and Folsom)

Founded: 2005

Mission: To deliver high quality images that are unique, compelling and appropriate to the occasion.

What Makes Your Business Unique: We work with clients to accomplish a personal touch that only comes from consistent collaboration from the onset of the engagement. We're able to provide a variety of photography styles and work diligently to find the right one for each client.

Number of Employees: 5

Favorite SOMA Attributes: We like the diversity and entrepreneurial spirit of the other merchants in the area. Our products and services are delivered personally, by us the owners. We like being in an environment where other businesses are taking the same hands-on approach to their endeavors.



Upcoming Events: Host for the March 12, 2008 South of Market Business Association (SOMBA) meeting 5-7pm **Our space is also available for rent for special events such as art openings, product launches, non-profit events, fundraisers, and networking parties.*

Contact Information:

Muse: (415) 863-1170

www.musephotostudio.com

Dekker: (415) 626-1580 www.dekker.com.au/

Laura Kudritzki & Beth Berman

SAN FRANCISCO REDEVELOPMENT AGENCY FISCAL YEAR BUDGET FOR 2008-09

The San Francisco Redevelopment Agency will be presenting their draft budget for the South of Market Project Area for the fiscal year 2008-09 at the January and February 2008 General SOMPAC meetings. Available tax increment financing will be discussed with regard to Project Area programs that the money will be allocated to in the fiscal year of 2008-09. The Project Area will run until 2020 with an anticipated net tax increment for next year of \$2.8 million. Please attend either meeting to discuss the SFRA budget for 2008-2009.

General SOMPAC meeting on Monday, January 28, 2007 6:00 PM and Monday, February 25, 2007 6:00 PM located at 1035 Folsom Street (between 6th & 7th) San Francisco, CA 94103 (415) 487-2166.

EASTERN NEIGHBORHOODS COMMUNITY PLANNING PROCESS UPDATE

Environmental Impact Report (EIR) Update

The Eastern Neighborhoods Rezoning and Area Plans Draft EIR (DEIR) was published on June 30, 2007 and had a 76 day public comment period, which closed on September 14, 2007. The Planning Department is working on responding to public comments made on the DEIR. The deadline for public comments on this Final Draft for Public Review has been extended to January 30, 2008.

Next steps in the environmental review process include: Responding to public comments, Revising the DEIR analysis as required, and Submitting the Final EIR to the Planning Commission for review. The entire Draft Environmental Impact Report for the Eastern Neighborhoods project is available on our website to download in PDF format. Please visit: <http://easternneighborhoods.sfplanning.org>

The Eastern Neighborhoods Final Draft Area Plans for Citizen Review are now available! Separate Draft Area Plans are available online at <http://easternneighborhoods.sfplanning.org>

This Draft for Citizen Review incorporates input received from all workshops, hearings and discussions received since the last draft Area Plan were released at the end of 2006 and in early 2007. The Planning Department welcomes any further comments, submitted in writing, by **January 30, 2008**. Any additional proposed changes to this Plan will be introduced at the Planning Commission, during adoption hearings expected in February 2008. Comments can be submitted by email to: eastern.neighborhoods@sfgov.org

Or by mail to:

Ken Rich

Eastern Neighborhoods Program
San Francisco Planning Department
1650 Mission Street, 4th Floor
San Francisco, CA 94117

Hard copies of the Draft Area Plans are available for purchase. Please stop by 1650 Mission Street, suite 400. Hard copies in color are available for \$5 per plan. A CD of the Draft Area Plans is also available at no cost. Please submit a request with your name and address to eastern.neighborhoods@sfgov.org

Please stay tuned for upcoming meetings in early 2008:

January:

Adoption package distributed to the Planning Commission and available to the public.
Planning Commission asked to initiate General Plan and Planning Code (zoning) amendments.
Formal notice period begins.

February – March:

Planning Commission hearings to take action on the Plans and zoning as well as certify the EIR.

How to Stay Involved

As the Eastern Neighborhoods program moves forward to the Planning Commission and then to the Board of Supervisors, we look forward to continued community input. After release of the final draft Area Plans, we will continue to take comments. These comments will be addressed during the adoption hearing process at the Planning Commission. The following are ways to stay informed and involved.

1. Periodic Updates

If you'd like to be added to our mailing list please contact Lily Langlois at Lily.Langlois@sfgov.org or at 575.9083.

2. Eastern Neighborhood's Website

Please visit your neighborhood's website for the most current information:

East SoMa: <http://eastsoma.sfplanning.org>

Mission: <http://mission.sfplanning.org>

Showplace Square/Potrero Hill: <http://showplacepotrero.sfplanning.org>

Central Waterfront: <http://centralwaterfront.sfplanning.org>

VICTORIA MANALO-DRAVES PARK UPDATE

- **RESTROOMS**

The new restrooms at the park are scheduled for opening on approximately January 7, 2008. The operating hours for the restrooms will be the same as the park hours, from dawn until dusk.

There is one area of the park that has yet to be completed. A new low fence will be installed along the area of the baseball athletic field. It will have a gate with a sign posted stating "no dogs are allowed on the athletic field".



- **STAN, SUBMERGING MAN GRANTED AN EXTENSION**



The Black Rock Arts Foundation has agreed to place Stan, Submerging Man, weighing just over one ton, 18 foot tall figure, lit from within and constructed out of fragments of reclaimed plastic toys and colored vinyl demo records created by Finley Fryer at the park through April 15, 2008.

The art installation, Stan, Submerging Man, was scheduled to come down on November 12, 2007. The Black Rock Arts Foundation has generously offered to cover the considerable cost of keeping Stan on exhibition for a few more months as many of you have requested.

At the Recreation & Parks Commission meeting on December 6, 2007 the Recreation & Parks Commission granted a temporary encroachment permit for the temporary art installation of Stan, Submerging Man at Victoria Manalo Draves Park. Stan has been in place since July 20, 2007. The permit to keep Stan was extended to April 15, 2008 by the Recreation and Parks Commission. This structure has been a great success with the public and with the immediate neighbors.

- **SF BEAUTIFUL GRANT**

Friends of VMD Park received a \$5,000 grant from SF Beautiful for a bulletin board/kiosk. San Francisco Beautiful continues the legacy of its founder, Friedel Klussmann, by awarding grants to organizations that seek to maintain or enhance San Francisco's unique beauty and livability. Projects must also encourage civic participation and create healthy, safe, and sustainable communities.

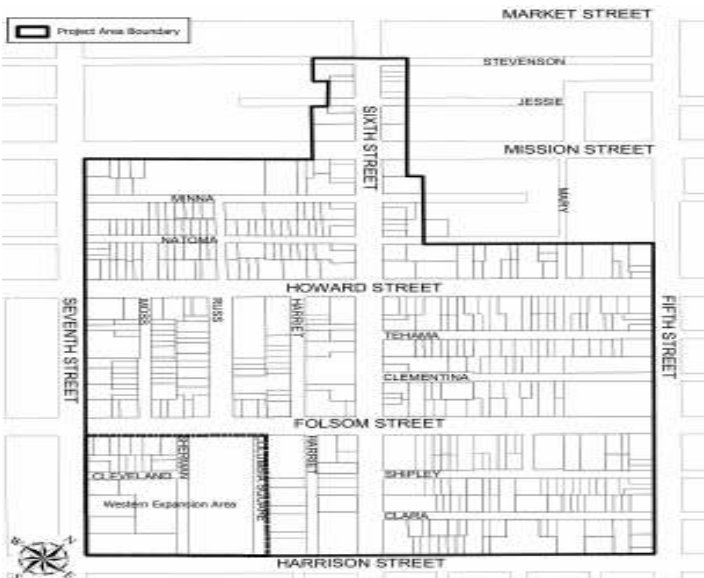
The quarterly grants, which usually range from \$1000 to \$5,000, are awarded to a wide range of projects. When evaluating applications, SFB pays particular attention to the level of community participation and to the sustainability of the project beyond the term of the grant. Grants are given on a one-time basis to community groups and organizations working on projects in San Francisco. Grants are not awarded to individuals. Proposal submission deadlines are: February 1, May 1, August 1, and November 1.

A meeting will be held to discuss the new bulletin board/kiosk that will be placed in the park. There are two tentative dates scheduled for either Thursday January 10th at 10:00 AM or Friday January 11th at 2:00 PM. The meeting will be held at the offices of Asian Neighborhood Design located at 1021 Mission Street, San Francisco, CA 94103. For further information, please contact Jason Ortega at: jortega_01@yahoo.com

SOMPAC

1035 Folsom Street
 San Francisco, CA 94103
 Phone: (415) 487.2166
 Fax: (415) 487.2169

SOMPAC Minutes & Agendas
 are available online via
www.sompac.com



SOMPAC MEMBERS

Non-SRO Residential Tenant/ Ingrid Aquino 415-255-9150 Member Since 2006	Business Owner Service/ Henry Karnilowicz (415) 621-7533 Member Since 2000/2007	SRO Hotel Owner/ Dipak Patel (415) 672-1203 Member Since 1999/2006	SRO Residential Tenant/ Antoinetta Stadlman (415) 552-4803 Member Since 1997/2007
Residential Property Owner/Occupant Stephen Best (415) 254-7041 Member Since 2007	CBO: SOMA Employment Center/ Don Marcos (415) 865-2105 Member Since 1997/2006	SRO Hotel Owner/ Nasir Patel (415) 260-3905 Member Since 2005/2007	Non-SRO Residential Tenant/ Mark Swenson (415)-543-6833 Member Since 2001/2007
SRO Residential Tenant Maureen Burns (415) 495-7381 Member Since 2007	SRO Residential Tenant/ John Markham 415-503-1843 Member Since 2006	CBO: SF Medical Outreach Program/ Charles Range/Vice Chair (415) 436-0111 Member Since 1997/2006	SEAT VACANCY Non-SRO Residential Tenant
CBO: Bindlestiff Studio/ Angelica Cabande 415-255-0440	CBO: Senior Action Network/ John Melone/Parliamentarian 415-546-1333 Member Since 2006	CBO: United Playaz Rico Riemedio (415) 573-6219 Member Since 2006	SEAT VACANCY CBO: Bessie Carmichael School Parent
Residential Owner/Non-Occupant/ William Curry, III (415) 648-4254 Member Since 2006	Residential Property Owner/Occupant Joshua Morgan (415) 846-6444 Member Since 2007	6th Street Retail/Commercial/ Marie Romero (415) 879-0438 Member Since 2006	South of Market Project Area Committee 1035 Folsom Street San Francisco, CA 94103 Tel (415) 487-2166 Fax (415) 487-2169 www.sompac.com
CBO: SOMCAN/ Chris Durazo/Chair (415) 348-1945 Member Since 2006	Non-SRO Residential Tenant/ Jason Radomes Ortega (415) 864-3722 Member Since 2006	SRO Residential Tenant/ Raymon Smith (415) 240-6449 Member Since 2006	

**Monthly SOMPAC meetings are held
 the third Monday of the month at 6:00 p.m.
 All meetings are open to the public-please join us.
 Meeting are held at: 1035 Folsom Street
 (between 6th & 7th)
 San Francisco, CA 94103**